



SHIN KWANG HWA PAPER MFG, CO., LTD.

SPECIALITY PAPER

A portrait of Hsien-Pang You, President of Shin Kwang Hwa Paper Co., Ltd. He is an elderly man with glasses, wearing a dark suit, white shirt, and a bolo tie. He is seated in a dark wooden chair. In the background, there is a large, ornate, multi-colored vase filled with red and white flowers. The text "從傳統到" is written in large, stylized Chinese characters in the upper right corner, and "From Tradition" is written in English below it.

從傳統到

From Tradition

新光華造紙股份有限公司 董事長 游賢邦
SHIN KWANG HWA PRESIDENT HSIEN-PANG YOU

現代 從藝術到科技

ional to Future From Arts to Technology

創

業歷經50餘年，貫徹公司經營理念—誠信、服務、創新之精神，配合國家之經濟發展，不斷的力求突破現況與回饋社會，公司曾先後榮獲全國工業減廢及防治污染績優廠獎並榮獲總統召見嘉勉，即為明證。

公司應致力於將多種少量化為批量生產，且運用ISO之精神使公司利潤及品質穩定不斷的提昇。對於員工教育更不遺餘力，同時秉持員工即是子女之信念，力求公司之制度及福利，好還要更好，達成勞資一家之共識。

縱觀21世紀世界高科技之發展，本公司全力在耐溫高效率過濾材之開發實屬必要，祈望公司在全體員工不斷求真、善、精下能永續經營成為國際性公司，最後尚祈各界先進指導鞭策。

After more than 50 years, we always carry out our operating principles-Honesty, Service, and Innovation, to coordinate with the economical development. By continuous breakthrough and feedback to our society. This is evidenced with our honors obtained from the national waste minimization and pollution-control award, and the meeting reception by our President Mr. Lee Teng Hui.

As we are devoted to batch production instead of less quantity production and adopt ISO spirit to improve quality stability and company's margin. Also, we make a great effort on employees' welfare, and have an idea to deem employees as our children to let labor and investor unite as one family.

Observing the high-tech development of 21st century, it is necessary for us to develop fully in high temperature resistant and high performance filtration. We hope that all of our employees could work together for being an international company in the world.

GENERAL MANAGER JIM G.J. CHENG



追求—

顧客滿意，公司如意，員工得意

SEARCHING—

Customers' satisfaction,

Companies' prosper,

Employees' content.

VICE-PRESIDENT TAI-CHENG YOU



貫徹—

員工用心、同事關心、老闆愛心

IMPLEMENTATION—

Employees' concentration,

Colleagues' concerns,

Boss' love.



Techenologic

新 觀 念 新 科 技

Under 50 years of technology experience and wisdom, we are devoted to complement re-engineering of enterprise's body, and advanced software, we produce our special products for our customers on request.

積50年之技術經驗與智慧，配合企業、工程、體質等再造及先進之軟硬體，為客戶製造所需的特殊產品是我們服務的宗旨。

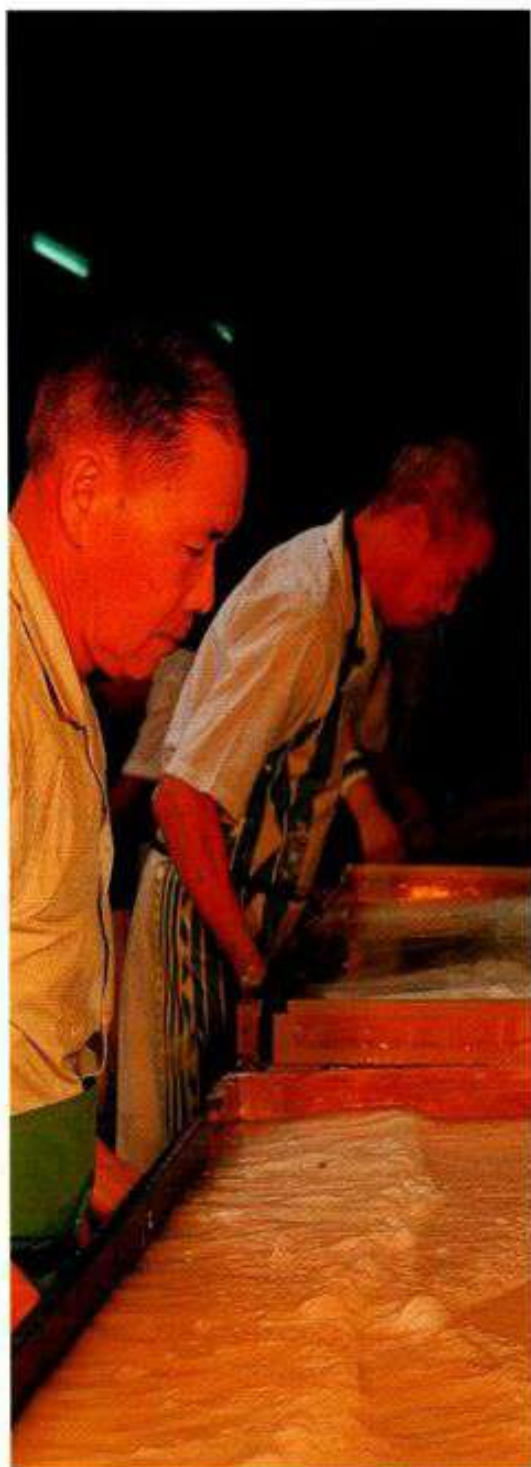


Artistic

藝 術 的 孕 育

By excellent culture, water quality, and climate, the city of Puli is borne to have a prosperous artistic life. Also, under such those good factors, Shin Kwang Hwa has a high respect to the arts and life, and thus will provide a wider and creative function for it.

人文、水質、氣候孕育出埔里山城之美與鄉土藝術的蓬勃，也促成特殊紙在埔里的發展；新光華對藝術的尊重與敬重，使紙的生命，提供更寬廣、更具創意的運用。



Traditional

五十年 的 技 術

Under inherited from paper creator of Tsai Lun, 105 A.D., Shin Kwang Hwa keeps on R&D to upgrade the hand-made paper quality and quantity to let traditional culture and economy be kept for a new life.

承襲西元105年蔡倫的造紙發明，在新光華不斷的研發下，提升了手工紙的質與量，使傳統與經濟並存，為文化保存再創生機。



Creative

創 新 的 現 代

To meet the demand of modern technology development, we Utilize organic fiber and inorganic fibre instead of wood and plant pulp. The means we depend on are our technology and equipments (Wet laid nonwoven paper machine).

迎合高科技發展的需要，從木、植纖維跨入人造纖維及礦物纖維，所依賴的是我們的技術與設備 (Delta-former)。

NEW TECHNOLOGY

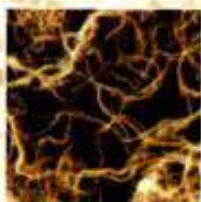


優秀的研發人才配合不斷的革新與研究精神，開拓了造紙原料之使用領域，因人造纖維改變了紙的包裝世界，因聚酰胺纖維而提高了絕緣材料的功效，更因超細玻璃纖維、礦物纖維的使用，使無塵室及防火材料發揮到最大的功效。

Excellent talents of R & D, and constant innovation, we expand a new territory for paper materials. Because the artificial fibre has changed the world of package, and by using of aramid fiber, we upgrade the function of insulation. More over, for the use of micro glass fiber and rock fibre, the best max. function of clean room and fireproof materials can be developed.



Rockfil



Synthetic pulp



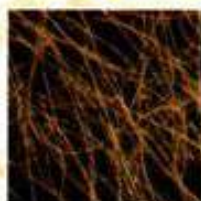
Polypropylene fiber



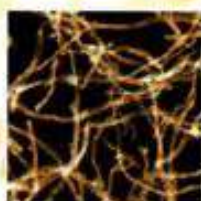
Polyester fiber



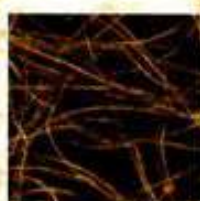
Vinyon fiber
(Polyvinyl alcohol)



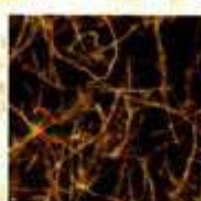
Straw pulp



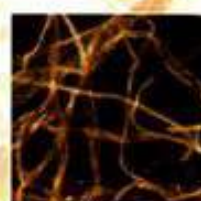
Linter pulp



Hemp pulp



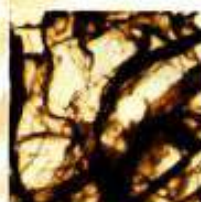
LBKP (Hard wood)



NBKP (Soft wood)



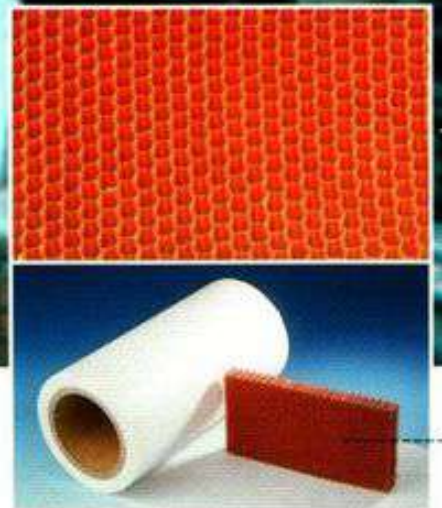
Rayon fiber



Aramid pulp



Micro glass fiber



絕緣材:

高刚性如蜂巢結構，高溫絕緣適用於電容器，高壓變壓器等

電纜包覆材:

一般用之高張力電纜包覆紙；高絕緣及耐溫之包線紙

過濾用材:

1. 廣用於溶劑、油類、食用油、空氣之過濾。
2. 熱空調及高效率用材，如HVAC、HEPA等。

醫療用材:

1. 柔軟透氣、高吸水性，適用於可棄式床單、口罩等。
2. 高張力、耐水、撥水、用於醫療器材之滅菌包裝。



For Insulation use:

High rigidity, such as Beehive structure, high temperature insulating, suitable for condenser and transformer, etc.

For Cable Cover:

1. Generally used for high tensile of cable wrapping paper.
2. High insulating and temperature-resisting wrapping paper.

For Filtering Use:

Widely used for the solvents, oils, eatable oils, filtered air, etc.
Hot air conditioning and high performance, such as HVAC, HEPA, etc.

For medical Use:

1. Soft, porosity, high absorption, disposable underpad and mouth cover.
2. High tensile, waterproof, repellent, applicable to the sterilized package for the medical instruments.



本著紙藝文化的傳承，藝術與生活結合的理念，「新光華文物館」正式於西元1990年6月成立，其精神無非是希望從「紙的傳統藝術」，提升到「紙創造藝術」，使紙的生命價值，能綿延不斷的傳承給於後代。

By inheriting the paper artistic culture, and the idea of combination of arts and life. **Shin kwang Hwa Museum House** was formally established in June 1990, and which is to hope that the **Traditional Paper Arts** can be upgraded to the level of **Paper Creation Arts** to let the life of paper extend constantly to our next century.



品賞藝術、 、 、 、

ARTISTIC LIFE

書畫用紙:

手工鹼性抄紙，保存久遠，不酸化、吸墨佳，廣用於書法、國畫、山水潑墨、宣染。

揉皺紙:

手工製造，柔韌、色彩豐富，適用於各種裝飾、包裝及紙藝之創作。

手工藝材用紙:

古典、柔韌、美觀、多樣化適用於各手工藝製作，如燈罩、燈籠、紙傘、紙扇、插頁、窗簾等。



Chinese Calligraphy:

Manual alkali papermaking, never acidified, Kept forever.

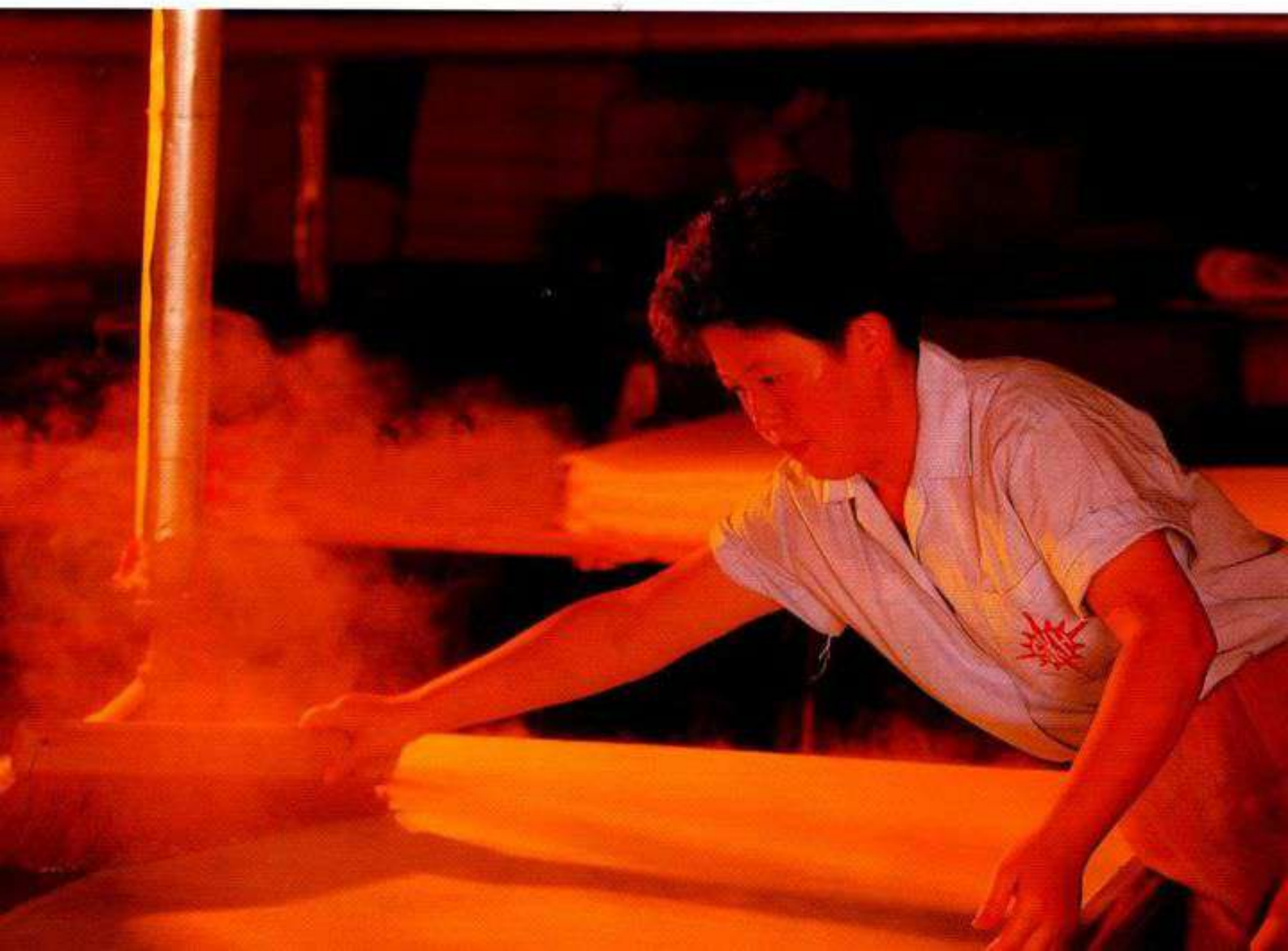
Excellent absorption. Widely applied to the calligraphy, Chinese painting, etc.

Momi Gami:

Made by hand, soft and tensile, colorful. Applicable to various decorations, wrapping, and creation of paper arts.

Hand Made Mulberry paper:

Classical, tensile, beautiful, and versatile, suitably used for various handiworks, such as lamp shade, Lantern, umbrella, interleaved, curtain, etc.



穩定品質、

消費者導向時代，顧客滿意是公司全體同仁做人做事的基本態度。

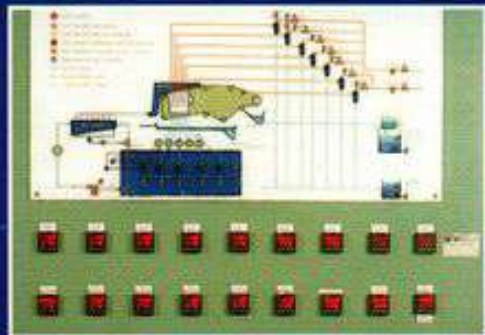
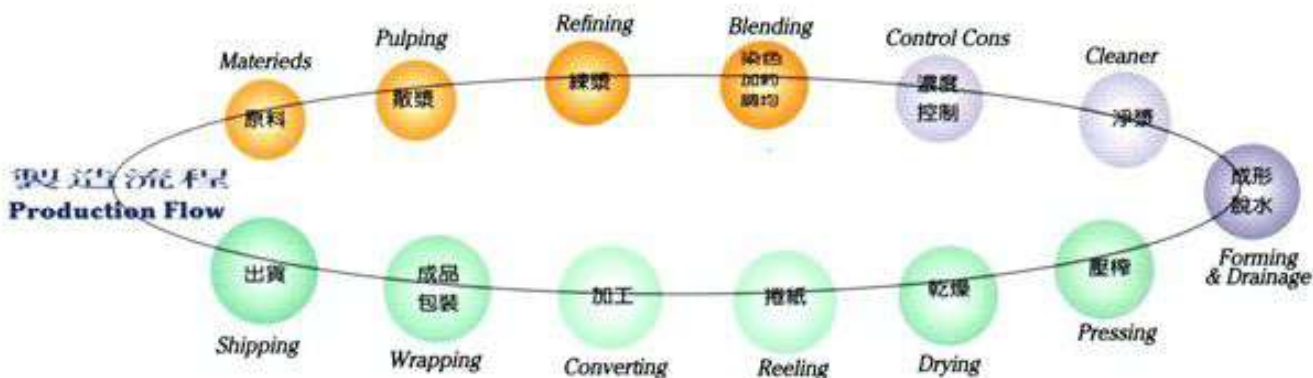
「品質」不單是穩定、美觀的名詞，於二十一世紀裡，更需兼具人性、文化、環保等內涵之價值觀。

而我們做好穩定品質的方式是除了各種自動控制及程序控制外，執行作業標準及推動「預防保養」到「保養預防」就是品質的保證。

To satisfy customers is a trend of consumption age, our company and all employees will work toward this goal.

"Quality" is not only a phrase of "Stable" and "Beautiful". In this 21st century, It shall include a humanistic, cultural, and environmental.

However, for stable quality supply, we not only implement the auto control but also promote from "preventive maintenance" to "maintenance prevention" to warrant customers' quality.



Quality Stability



美耐皿用紙:

MD/CD值1.5以下，加工不卷曲，高淨度，強韌及吸收性；印刷不起毛及尺寸安定高，適用於竹木盤及美耐皿餐具。

特殊材料包裝:

熱自黏性，透氣性及印刷適性，適用於食品，乾燥劑，抗氧化劑，除蟲丸劑之包裝。

紙繩類:

適用於紙藝創作，紙袋，紙繩，各種高級包裝袋。

Overlap paper:

MD/CD ratio below 1.5 and never curled, high cleaning, excellent dimension stability for printing. Applicable to the bamboo dish and melamine ware.

Special package materials:

Hot sealable, permeability, suitable for the printing. Applicable to package of foods, silica gel, antioxidant, insect-remover, etc.

Paper rope:

Suitable for creation to paper arts, paper bags, paper rope, and high-class packing band. etc.



永續經營、

EVERLASTING ADMINISTRATION

工廠環境為品質之本，教育為品質之母，員工的健康與向心力是企業永續之命脈，1985年引進5S及QCC促成今日社團活動的發展，也開啓了各項福利制度之門。



The environment of factory is the root of quality, and the education is the mother of quality. The health and concentration force of the employees are the main factor of everlasting operation of the company. In 1985, we introduce the 5S and QCC activities to develop for today's association activities and also to open a door of various welfare systems.



環境保護是企業之責任，實施減廢、檢廢、檢廢、減費，不但降低公司各項成本，也為下一代提供美好的環境，更塑造優良的企業文化。

To protect our environment also is a responsibility of the enterprise, we carry out 5R of waste minimization to save our various costs, and also provide a good environment for our next generation and obtain a excellent CI.



引線紙:

韌性佳，適用浸式高速連續加工，過程安全。

人造花用紙:

高張力，熱可塑性，耐水，適用於人造花幹、花、葉之製作材料。

包裝用通材:

耐水、高挺度，適用於各種高級禮品及鮮花之包裝，多樣紋路及顏色供選擇。

鈔帶紙及美髮紙:

鈔帶紙: 韌性佳，耐折、柔軟，廣用於銀行界。

美髮紙: 冷電、熱燙用，高吸藥性耐水不破。



Firecracker core paper:

High tensile, Suitably used for wet & high speed procedure safely.

Artificial flower paper:

High tension, plasticizing, waterproof, suitably used for the materials of artificial flower, stem, leaves, etc.

Packing and decoration materials:

Waterproof, high stiffness, suitably used for various packings on high-class gift and flowers. many different pattern and colored paper is optional.

Currency band:

Excellent durability tensile strength, folding & soft capacity. Widely adopted by the banks circle.

Hair-curl paper:

For cold and hot permanent, high chemical absorbing, waterproof, and wet strength.

邁向二十一世紀



公司沿革

- 1945年 11月 游賢邦先生設立先華製棉廠，手工製造戶籍地政用紙、鈔票紙、炮心紙、電報紙等。
- 1964年 12月 更名新光華造紙股份有限公司
添購第一部抄紙機，生產特殊棉紙。
- 1969年 8月 新光華遷到現址，再添購第二部抄紙機。
- 1973年 2月 台北分公司成立。
- 1979年 11月 同泰棉宣紙工業有限公司成立。
- 1980年 10月 香港恆成貿易公司成立。
- 1982年 6月 台灣恆成貿易公司成立，專營進口紙張買賣。
- 1990年 3月 新光華造紙股份有限公司泰國廠成立。
- 1990年 6月 文物館成立。
- 1991年 6月 獲全國工業減廢十大績優工廠。
- 1992年 12月 獲全國防治污染十大特優工廠。
獲總統召見嘉勉。
- 1994年 5月 廠房擴建完成。
- 1994年 6月 安裝台灣第一台人造特殊纖維抄紙機。
- 1995年 11月 泰國二廠擴建生產。
- 1997年 2月 恆成貿易公司進口紙展示中心成立。

COMPANY HISTORY

- Nov. 1945 Mr. You Hsien-Pang established Kwang Hwa Hand Papermaking Factory to produce deed paper, core paper, and paper, etc.
- Dec. 1964 The factory was changed the name as Shin Kwang Hwa Paper MFG Co., Ltd. and purchase our first set of paper machine instead of hand made.
- Aug. 1969 Shin Kwang Hwa was moved to the present address, and we increased to purchase No2 of paper machine to produce special cotton paper.
- Feb. 1973 Taipei branch office was established.
- Nov. 1979 Tung Tai Cotton & Xuan Paper Industrial, Ltd was established.
- Oct. 1980 Hang Shing Trading Co., in Hongkong was established.
- Jun. 1982 Taiwan Hum Chun Trading Co., Ltd. was established to be engaged in trading of imported paper.
- Mar. 1990 Shin Kwang Hwa Paper MFG. Co., Ltd (Thailand) was established.
- Jun. 1990 Museum House was set-up.
- Jun. 1991 Won the honor of excellent factory for waste minimization.
- Dec. 1992 Won the award of excellent factory for pollution control.
- May. 1994 Planthouse was completed for enlargement.
- Jun. 1994 Installed the first set of DELTA-FORMER in Taiwan.
- Nov. 1995 The 2nd planthouse in Thailand was set-up for production.
- Feb. 1997 The show center of Hum Chun Trading Co., Ltd. was built.

MARCH INTO THE 21ST CENTURY.



我們的宗旨是以客戶為伙伴，對今日需求市場制定出創造性之對策
以求共同的發展

請聯絡，我們給您最好的！

Our emphasis is the development of customer partnerships so that
we can work together to generate creative solutions to today's
demanding market.

Please Contact us now, you can get the best what you need.



誠信、服務、創新

新光華造紙股份有限公司

總公司

南投縣埔里鎮54513新生路15-1號
15-1 SHIN SENG RD PU-LI TSIEN, NANTOU, TAIWAN R.O.C.
TEL:886-49-982011 FAX:886-49-981104
E-MAIL:PULISKH @ TCTS. SEED. NET. TW

分公司

台北市10575慶城街48號
48, CHENG CHERNG ST., TAIPEI 10575 TAIWAN, R.O.C.
TEL:886-2-7136913 FAX:886-2-7165736

香港恆成貿易公司

HANG SHING TRADING CO.
香港德輔道中272-284號興業商業中心2308室23樓
RM2308 HING YIP COMMERCIAL CENTRE
272-284 DES VOEUX ROAD CENTRAL HONG KONG
TEL:852-25417903 FAX:852-25431966

新先華廣東省分公司

地址：廣東省惠陽市漫林鎮開發區
TEL:86-752-3856464 FAX:86-752-3856424

泰國

SHIN KWANG HWA PAPER MFG. (THAILAND) CO., LTD.
59 MU-8 BANGKRACHAO SAMUTSAKHON 74000 THAILAND
TEL:66-34-839508-10 FAX:66-34-839511